



Po Leung Kuk Ngan Po Ling College

保良局顏寶鈴書院

26 Sung On Street, Tokwawan, Kowloon

九龍土瓜灣崇安街 26 號

Tel 電話： 2462 3932

Fax 傳真： 2462 3929

Ref: Sch/Par/Reg/01/IBYear1/2223

### **2022/2023 Information for IB Year 1 Registration**

Please find the following documents in the file:

1. A Summer Programme Schedule
2. A Letter to Parents about Arrangement of School Uniform and Textbook Sale, Tuition Fee Arrangement, Direct Debit of Tuition Fee, School Fee Remission Scheme 2022/2023, Order of Exercise Books, Lunch Arrangement, eClass Mobile Application for Parents, Provision of Microsoft Office 365 ProPlus Student Accounts to New Students, Processing of Personal Data in the Form of Photographs and Videos, Student Personal Accident Insurance Plan and Withdrawal Policy
3. A Letter to Parents about School Policies Concerning Examinations, Learning and Teaching, and Library 2022/2023
4. A Letter to Parents about Reminders on School Rules and the Use of Mobile Computer Devices Policy
5. A Textbook List with Textbook Online Ordering Guidelines
6. A Lunch Order Form for September
7. A School Uniform Design Sheet
8. School Uniform Suppliers' Information
9. A School Bus Service Application Form
10. An Application Form for Admission to Student Hostel
11. A Medical History Form
12. A Reply Slip for all attached Letters to Parents
13. A Health Declaration Form



Po Leung Kuk Ngan Po Ling College

保良局顏寶鈴書院

26 Sung On Street, Tokwawan, Kowloon

九龍土瓜灣崇安街26號

Tel 電話：2462 3932

Fax 傳真：2462 3929

Ref: Sch/Par/Reg/01/IBYear1/2223

## 2022/2023 IB Year 1 註冊資料

資料夾內附有以下文件：

1. 暑期行事曆
2. 有關校服及教科書售賣安排、學費安排、以自動轉賬形式繳交學費、學費減免計劃 2022/2023、訂購練習簿、午膳安排、電子通告及即時訊息、提供「Microsoft Office 365 專業增強版」學生帳戶予新生之事宜、有關個人資料(照片及影片)之處理、學生(團體人身)意外保險及退學政策事宜之通告
3. 有關測考、學與教及圖書館政策之通告 2022/2023
4. 有關校規提醒事項及使用流動電腦裝置規則之通告
5. 教科書書目表及網上訂購教科書指引
6. 九月份午餐訂購表
7. 校服式樣
8. 校服商資料
9. 校巴服務申請表
10. 入住學校宿舍申請表
11. 個人病歷表
12. 通告回條
13. 健康申報表



Po Leung Kuk Ngan Po Ling College

保良局顏寶鈴書院

26 Sung On Street, Tokwawan, Kowloon

九龍土瓜灣崇安街 26 號

Tel 電話：2462 3932 Fax 傳真：2462 3929

Ref: Sch/Par/Reg/02/IBYear1/2223

**IB Year 1 Summer Programme Schedule (2022/2023)**

	Activity	Date	Time	Venue
1.	Online Ordering for Textbooks	29 July 2022 (Fri) – 5 August 2022 (Fri)	00:00-23:59	
2.	Release of 2022-2023 Class Lists	2 August 2022 (Tue)	Refer to the Announcement Section of School Intranet	
3.	Collection of School Fee for September and Exercise Book Fee by School through AUTOPAY*	15 August 2022 (Mon)		
4.	Collection of Textbooks	25 August 2022 (Thur)	11:00-12:00	Tuck Shop (G/F)
5.	School Commencement Ceremony##, Hall Assembly## and Collection of Exercise Books	1 September 2022 (Thur)	08:10-12:30	School Hall (2/F) / Homerooms
6.	Hall Assembly	2 September 2022 (Fri)	08:10-12:30	School Hall (2/F) / Homerooms
7.	Normal School Day^	5 September 2022 (Mon)	08:10-15:25	Homerooms

\* Tuition fee for September and exercise book fee will be collected through AUTOPAY on **15 AUGUST 2022**. Those applying for Local Education Allowance Scheme also have to pay these fees. Please make sure that there is a sufficient amount of money in the designated bank account on the payment date. In case you opt not to purchase exercise books, please submit a written application to the school before 5 August 2022. Once it is approved, the exercise book fee (except the student handbook fee) will be exempted from the autopay amount in August 2022.

## In light of the pandemic situation and EDB guidelines on mass activities, arrangement of School Commencement Ceremony and Hall Assembly will be released later.

^ Arrangement of whole-day school resumption will be subject to the latest vaccination rate of students.



Po Leung Kuk Ngan Po Ling College

保良局顏寶鈴書院

26 Sung On Street, Tokwawan, Kowloon

九龍土瓜灣崇安街 26 號

Tel 電話：2462 3932 Fax 傳真：2462 3929

Ref: Sch/Par/Reg/02/IBYear1/2223

IB Year 1 暑期行事曆 (2022/2023)

	活動	日期	時間	地點
1.	網上訂購教科書	29/07/2022 (星期五) - 05/08/2022 (星期五)	00:00-23:59	
2.	公布 2022 - 2023 分班名單	02/08/2022 (星期二)	請留意學校內聯網的校園最新消息欄	
3.	以自動轉賬形式收取九月份學費 及練習簿費*	15/08/2022 (星期一)		
4.	領取教科書	25/08/2022 (星期四)	11:00-12:00	地下小食部
5.	開學禮##、週會##及領取練習簿	01/09/2022 (星期四)	08:10-12:30	二樓禮堂/課室
6.	週會	02/09/2022 (星期五)	08:10-12:30	二樓禮堂/課室
7.	正常上課^	05/09/2022 (星期一)	08:10-15:25	課室

\*九月份學費及練習簿費將以自動轉賬形式於 8 月 15 日收取。申請本地教育津貼者亦須要繳交以上費用。請確保轉賬當日閣下之戶口存款充足，以繳付有關費用。如閣下不欲購買練習簿，請於 8 月 5 日前以書面形式向本校申請。經校方批准後，練習簿費(學生手冊費用除外)將被豁免並於 2022 年 8 月之自動轉賬金額中扣除。

##鑑於疫情及教育局予學校的集會活動指引，開學禮及週會安排將稍後發放。

^ 全日復課之安排將根據學生最新的疫苗接種率再作宣布。





Po Leung Kuk Ngan Po Ling College

保良局顏寶鈴書院

26 Sung On Street, Tokwawan, Kowloon

九龍土瓜灣崇安街 26 號

Tel 電話：2462 3932

Fax 傳真：2462 3929

Ref: Sch/Par/172/2122

26 July 2022

Dear Parents / Guardians,

**1. Arrangement of School Uniform and Textbook Sale (2022/2023)**

School uniform and textbook sale at school will not be arranged this year to avoid crowds due to the COVID-19 pandemic. Parents and students are welcome to purchase uniform at the retail stores of our uniform suppliers and make online purchase from our textbook supplier or from other suppliers. Details of the suppliers are as follows:

School Uniform Supplier	Remarks
(a) Oi Man School Uniform & Fashion Co.	(1) Summer Uniform (Including Boys' shirt and trousers, Girls' shirt, skirt and bow) (*Sweater is available.)
(b) Hop Chung Uniform Limited	
	(2) PE Uniform (Including T-shirt, shorts, pants and jacket)

Textbook Supplier	Remarks
Academic & Professional Book Centre	<ul style="list-style-type: none"><li>➤ Only online ordering is provided.</li><li>➤ Offers: textbooks published by foreign publishers (12% off); textbooks published by local publishers (8% off)</li><li>➤ Website for online ordering: <a href="http://bookshop4u.com/npl">bookshop4u.com/npl</a></li><li>➤ Period of online ordering: 29 July 2022 (Fri) – 5 August 2022 (Fri)</li><li>➤ Deadline of online ordering: 5 August 2022 (Fri) (23:59)</li><li>➤ Arrangement for collection of textbook has been released under "School Information" section on school web main page.</li></ul>

Ref: Sch/Par/172/2122



# Po Leung Kuk Ngan Po Ling College

保良局顏寶鈴書院

26 Sung On Street, Tokwawan, Kowloon

九龍土瓜灣崇安街 26 號

Tel 電話： 2462 3932

Fax 傳真： 2462 3929

## 2. Tuition Fee of School Year (2022/2023)

Please be informed that the tuition fee of school year 2022/2023 is as follows:

<u>DSE</u>				<u>IB</u>			
<u>Form</u>	<u>Tuition Fee per Annum</u>	<u>No. of Monthly Installment</u>	<u>Monthly Tuition Fee</u>	<u>Form</u>	<u>Tuition Fee per Annum</u>	<u>No. of Monthly Installment</u>	<u>Monthly Tuition Fee</u>
1	\$34,700	10	\$3,470	1	-	-	-
2	\$34,700	10	\$3,470	2	-	-	-
3	\$34,700	10	\$3,470	3	-	-	-
4	\$34,700	10	\$3,470	4	\$34,700	10	\$3,470
5	\$34,700	10	\$3,470	5	\$95,000	10	\$9,500
6	\$34,700	5	\$6,940	6	\$95,000	7	\$13,580 x 1 <sup>st</sup> month \$13,570 x 6 months

Students of Direct Subsidy Schools are not eligible for the Senior Secondary Fee Remission Scheme provided by the Student Financial Assistance Agency of the HKSAR. Instead, our school has our own Fee Remission Scheme for families with financial difficulties.

Details are available on our school website <http://www.npl.edu.hk/en/site/view?name=Scheme> (also available at the General Office).

For F.2, F.3, F.4, F.5 and F.6 in 2022/2023, the tuition fee of September together with the exercise book fee will be collected through AUTOPAY on **15 August 2022**, including those who will apply for the Government's Local Education Allowance Scheme. Please note the following:

- 1) The place of your child will be surrendered if September's tuition fee cannot be collected on **15 August 2022**.
- 2) All paid tuition fees are non-refundable.

From October 2022 onwards, the date for AUTOPAY is on the 5<sup>th</sup> day of each month. In case of change of Direct Debit Account or students' withdrawal from our school, please inform the school in writing one month in advance and complete a new 'Direct Debit Authorization' form or the 'Notice of Withdrawal'.



Po Leung Kuk Ngan Po Ling College

保良局顏寶鈴書院

26 Sung On Street, Tokwawan, Kowloon

九龍土瓜灣崇安街 26 號

Tel 電話：2462 3932

Fax 傳真：2462 3929

### **3. School Fee Remission Scheme (2022/2023)**

The application of 2022/2023 School Fee Remission Scheme will start in September 2022. Applicants need to provide a copy of 2022/2023 Eligibility Certificate (EC) issued by the Student Financial Office (SFO) or Notification of Successful Application of Comprehensive Social Security Assistance (CSSA) by the Social Welfare Department as one of the essential documents for applying the school fee remission scheme. **Please note that obtaining the above documents does not mean that you have already applied for the School Fee Remission Scheme. Applicants must take the initiative to reapply for the scheme every year before the deadline. Parents should pay attention to the announcement of the scheme. Late application may not be entertained.**

For obtaining the 2022/2023 ECs from SFO, applicants **MUST** firstly apply for the School Textbook Assistance (TA) Scheme / Student Travel Subsidy (STS) Scheme / Subsidy Scheme for Internet Access Charges (SIA) provided by the SFO.

You may visit the website of the Working Family and Student Financial Assistance Agency (<https://www.wfsfaa.gov.hk/sfo/en/index.htm>) for the information of applying for the financial assistance mentioned above. All application of financial assistance for primary and secondary students submitted on or after 1 June 2022 will be handled by the SFO after the applications received by 31 May 2022 are processed. Notification of result and release of financial assistance to these applicants will therefore be deferred.

For families currently receiving the CSSA which have children studying in primary and secondary schools, they should apply directly to the Social Welfare Department for school-related assistance and wait for the notification of successful application. They do not need to submit the application of the financial assistance mentioned above to the SFO.

The application form of 2022/2023 school fee remission scheme will be available in the General Office in September 2022. You may visit our school website <http://www.npl.edu.hk/en/site/view?name=Scheme> for our school-based school fee remission scheme.

Should you have any queries, please contact Student Affairs Committee.





Po Leung Kuk Ngan Po Ling College

保良局顏寶鈴書院

26 Sung On Street, Tokwawan, Kowloon

九龍土瓜灣崇安街 26 號

Tel 電話：2462 3932

Fax 傳真：2462 3929

#### **4. Order of Exercise Books (2022/2023)**

Please be informed that the exercise book fee will be **HK\$ 76.00** for school year 2022/2023:

Items	Quantity	Unit Price	Amount
1. Chinese Composition Exercise Book	2	6.00	12.00
2. Chinese Dictation Book	1	2.00	2.00
3. English Quiz Book	2	2.00	4.00
4. English Composition Book	2	3.40	6.80
5. Long Single Lined Exercise Book	6	1.70	10.20
6. Short Single Lined Exercise Book	1	1.30	1.30
7. Single Line Paper (50 sheets)	2	5.30	10.60
8. A4 Folder	2	2.30	4.60
9. Student Handbook	1	24.50	24.50
Total			HK\$ 76.00

The exercise book fee of **HK\$ 76.00** will be collected together with the tuition fee for September by **AUTOPAY** into the school account on **15 August 2022**. The listed exercise books will be delivered to students in September. No refund will be made for any paid fees.

#### **5. Lunch Arrangement for Whole-Day School (2022/2023)**

Please be informed that all junior form students (F.1 – F.3) are required to have lunch in school while senior form students (F.4 – F.6) are allowed to eat out.

Junior form students can bring their own lunch or order from Vitaland Services Limited by submitting the lunch order form, or parents can send the lunch box to the school daily at 11:30. Senior form students will be allowed to leave school for lunch at 12:30, and they should return to school no later than 13:35. To ensure students' safety, students need to check in and out with their valid student ID cards. Those who fail to do so would not be allowed to leave the campus during lunch time.





Po Leung Kuk Ngan Po Ling College

保良局顏寶鈴書院

26 Sung On Street, Tokwawan, Kowloon

九龍土瓜灣崇安街 26 號

Tel 電話 : 2462 3932

Fax 傳真 : 2462 3929

#### **6. eClass Mobile Application for Parents**

To strengthen the communication between parents and the school, we have adopted a mobile application for dissemination of school information. You can download and install “eClass App” in your mobile device to receive our push messages, the latest school news and our electronic school notices. You can also sign the reply slips of our circulars electronically via your smartphone.

eClass App can be downloaded with the following QR codes, or from iTunes or Google Play. A user manual is now available on our school webpage ([http://www.npl.edu.hk/en/current/eclassapp\\_en.pdf](http://www.npl.edu.hk/en/current/eclassapp_en.pdf)).



Android version



iPhone version

Should you have any enquiries on the use of eClass App, please contact the IT team of the service provider, BroadLearning Education (Asia) Limited, at 39133211.

#### **7. Provision of Microsoft Office 365 ProPlus Student Accounts to New Students**

To facilitate IT-aided learning, our school has joined The Enrollment for Education Solutions (EES) scheme for the subscription of Microsoft productivity tools, such as Microsoft Word, Excel, PowerPoint and OneNote.

Each student can download and install Microsoft Office 365 ProPlus on up to 5 devices (PC or Mac) as well as Office Mobile on up to 5 mobile devices free of charge.

Each student will be given an individual login ID and password of the Microsoft Office ProPlus account in form of a simple memo in September.

Should you have any queries, please contact IT Committee.

#### **8. Processing of Personal Data in the Form of Photographs and Videos**

Photos and videos of students may be taken during school activities. The photos or videos may be used in both printed and digital form, in various channels where the School disseminates information about its activities. The photos or videos are intended to be published online on our school webpage and/ or used for other purposes for public interest.



Po Leung Kuk Ngan Po Ling College

保良局顏寶鈴書院

26 Sung On Street, Tokwawan, Kowloon

九龍土瓜灣崇安街 26 號

Tel 電話： 2462 3932

Fax 傳真： 2462 3929

### **9. Student Personal Accident Insurance Plan**

In order to provide protection to students in case of accidents, Po Leung Kuk has purchased a student personal accident insurance plan for all Po Leung Kuk affiliated schools.

The insurance is operative while the students are participating in all school activities of Po Leung Kuk Affiliated School inclusive of normal class and rest time organized by Po Leung Kuk and extended to cover while the insured is traveling directly to and from the home and place of meeting place.

The plan is governed by the detailed terms and conditions in the official policy documents issued by the insurance company. The school acts solely as a facilitator in the claim procedures. Eligibility of the claim and the coverage amount are subject to the final decision of the insurance company.

To make any claim requests, please inform the school within 7 days of the accident with a medical report and all relevant documents.

### **10. Withdrawal Policy**

Our “Notice of Withdrawal” is the official document for parents to inform the school of student withdrawal. Notification by other means such as emails, letters or verbal notices is not acceptable. Should you plan to withdraw your child from the school, please complete the “Notice of Withdrawal” form. The form should be returned to the General Office in person at least **ONE MONTH** prior to the effective day. Please note that our tuition fee is charged on an instalment basis. No refund will be made if students withdraw from the school in between instalments.

Should you have any queries, please contact Student Affairs Committee.

Yours faithfully,



Student Affairs Committee

Ref: Sch/Par/172/2122



Po Leung Kuk Ngan Po Ling College

保良局顏寶鈴書院

26 Sung On Street, Tokwawan, Kowloon

九龍土瓜灣崇安街 26 號

Tel 電話：2462 3932

Fax 傳真：2462 3929

Ref: Sch/Par/172/2122

敬啟者：

1. 校服及教科書售賣安排(2022/2023)

鑑於新冠病毒疫情，為免人群聚集，今年將不會舉行校服及教科書校內直銷。學生及家長可到校服供應商的門市選購校服及向教科書供應商作網上訂購。貴家長可選用學校提供的供應商或光顧其他供應商。供應商的詳情如下：

校服供應商	備註
(a) 愛民校服時裝公司	(1) 夏季校服 (包括男生恤衫、西褲、女生恤衫、校裙、校呔) (*包括冷衫)
(b) 合眾校服公司	
	(2) 體育服裝 (包括 T 恤、短褲、外套、長褲)

教科書供應商	備註
學術專業圖書中心有限公司	<ul style="list-style-type: none"><li>➤ 只提供網上訂購。</li><li>➤ 優惠：外國出版社教科書(88 折)；本地出版社教科書(92 折)</li><li>➤ 網上訂購網址：bookshop4u.com/npl</li><li>➤ 網上訂購日期：2022 年 7 月 29 日 (星期五) 至 8 月 5 日 (星期五)</li><li>➤ 網上訂購截止日期：2022 年 8 月 5 日 (星期五) (23:59)</li><li>➤ 取書安排已於校網首頁之 School Information 發放。</li></ul>

Ref: Sch/Par/172/2122





Po Leung Kuk Ngan Po Ling College

保良局顏寶鈴書院

26 Sung On Street, Tokwawan, Kowloon

九龍土瓜灣崇安街 26 號

Tel 電話：2462 3932

Fax 傳真：2462 3929

## 2. 有關(2022/2023)年度學費事宜

本校 2022/2023 年度各級學費及相關細則如下：

主流課程				國際課程			
年級	全年學費	期數	每月學費	年級	全年學費	期數	每月學費
1	\$34,700	10	\$3,470	1	—	—	—
2	\$34,700	10	\$3,470	2	—	—	—
3	\$34,700	10	\$3,470	3	—	—	—
4	\$34,700	10	\$3,470	4	\$34,700	10	\$3,470
5	\$34,700	10	\$3,470	5	\$95,000	10	\$9,500
6	\$34,700	5	\$6,940	6	\$95,000	7	\$13,580 x 首月 \$13,570 x 其餘六個月

本校為一所直資中學，因此學生不能申請政府學生資助辦事處提供之高中學費減免計劃。惟本校設有校本學費減免計劃，供有需要之家庭申請。

詳情已於本校網 <http://www.npl.edu.hk/en/site/view?name=Scheme> 公布(亦可於校務處索取)，敬請留意。

2022/2023 年度中二、中三、中四、中五及中六學生之九月份學費連同練習簿費將於 2022 年 8 月 15 日 以自動轉賬形式收取(申請本地教育津貼者亦不例外)。請注意：

- 1) 如本校未能於 2022 年 8 月 15 日 收取九月份學費，學生將被視為自動放棄學位。
- 2) 所有已繳交之學費將不予退還。

由 2022 年 10 月起，每月第五天為學費自動轉賬日。如需更改自動轉賬之戶口或申請退學，請於一個月前以書面形式通知學校，及必須填妥有關的「自動轉賬授權書」或「退學通知書」。





Po Leung Kuk Ngan Po Ling College

保良局顏寶鈴書院

26 Sung On Street, Tokwawan, Kowloon

九龍土瓜灣崇安街 26 號

Tel 電話： 2462 3932

Fax 傳真：2462 3929

### 3. 學費減免計劃 (2022/2023)

本校將會於 2022 年 9 月開始接受 2022/2023 學費減免計劃申請，申請人在申請時必須提交由學生資助處發出的 2022/2023 「資格證明書」副本或由社會福利署發出的綜合社會保障援助(綜援)計劃「申請獲准通知書」副本以用作審批學費減免之用。請注意，取得上述文件並不代表已經申請本校之學費減免計劃，申請人有責任於每年截止日期前重新申請，家長應留意本校稍後發出有關學費減免計劃之通告。逾期申請將有可能不獲處理。

申請人如要獲得學生資助處發出的「資格證明書」，必須先申請由學生資助處提供的學校書簿津貼計劃 / 學生車船津貼計劃 / 上網費津貼計劃。

家長可瀏覽在職家庭及學生資助辦事處網頁(<https://www.wfsfaa.gov.hk/sfo/tc/index.htm>)，以便獲取更多申請上述資助計劃的資訊。所有在 2022 年 6 月 1 日或以後遞交的中、小學生資助申請，將會在學生資助處完成處理 2022 年 5 月 31 日或之前收到的申請後才獲處理，該類申請人將較遲收到學生資助處的結果通知書和發放的資助。

一般而言，正在領取綜援的家庭若有子女就讀中、小學，有關家庭應直接向社會福利署為其子女申領與就學有關的津貼，待社會福利署發出申請獲准通知書，而毋須向學生資助處遞交申請表格。

本校之學費減免計劃申請表可於 2022 年 9 月在校務處索取。有關校本學費減免詳情，可瀏覽本校網頁(<http://www.npl.edu.hk/en/site/view?name=Scheme>)。

如有查詢，請與學生事務組聯絡。



Po Leung Kuk Ngan Po Ling College

保良局顏寶鈴書院

26 Sung On Street, Tokwawan, Kowloon

九龍土瓜灣崇安街 26 號

Tel 電話：2462 3932

Fax 傳真：2462 3929

#### 4. 練習簿費 (2022/2023)

2022/2023 學年之練習簿費合共港幣 \$ 76.00，其細項如下：

項目	數量	單價	金額
1. 中文作文簿	2	6.00	12.00
2. 中文默書簿	1	2.00	2.00
3. 英文小測簿	2	2.00	4.00
4. 英文作文簿	2	3.40	6.80
5. 長單行簿	6	1.70	10.20
6. 短單行簿	1	1.30	1.30
7. 單行紙 (50 張)	2	5.30	10.60
8. 文件夾	2	2.30	4.60
9. 學生手冊	1	24.50	24.50
總金額			\$ 76.00

練習簿費合共港幣 76.00將會連同九月份的學費於 2022 年 8 月 15 日以自動轉賬形式收取。上述書簿將於九月份派發。所有已繳之費用一概不獲發還。

#### 5. 全日課之午膳安排 (2022/2023)

初中學生(中一至中三)須留校午膳，而高中學生(中四至中六)則可外出午膳。

初中學生可自備午膳，或遞交午膳訂購表向維他天地服務有限公司訂購，家長亦可於每天 11 時 30 分把餐盒送到學校。高中學生可於下午 12 時 30 分開始外出用膳，並須於下午 1 時 35 分前回校。學生外出及回校時需以學生證進行電腦系統登記。為保障學生安全，如未能以學生證進行出入登記，則不可外出午膳。



Po Leung Kuk Ngan Po Ling College

保良局顏寶鈴書院

26 Sung On Street, Tokwawan, Kowloon

九龍土瓜灣崇安街 26 號

Tel 電話：2462 3932

Fax 傳真：2462 3929

## 6. 電子通告及即時訊息事宜

為進一步提高家校通訊的效率，本校會以即時訊息及電子通告形式發放學校資訊。使用智能手機的家長只需下載「eClass App」，便可收到校方的推播訊息、接收學校資訊、查看學校通告並簽閱有關回條。

「eClass App」可透過以下 QR 碼直接下載，或以 iTunes 或 Google Play 下載。用戶指引現可於本校網頁下載([http://www.npl.edu.hk/ch/current/eclassapp\\_chin.pdf](http://www.npl.edu.hk/ch/current/eclassapp_chin.pdf))。



Android 版本



iPhone 版本

如對使用「eClass App」手機應用程式有任何疑問，可致電 3913 3211 與服務供應商博文教育(亞洲)有限公司聯絡。

## 7. 提供「Microsoft Office 365 專業增強版」學生帳戶予新生之事宜

為配合電子輔助學習，本校已參與微軟的年度性軟件訂購計劃，為學生提供一系列辦公軟件，如 Microsoft Word, Excel, PowerPoint 及 OneNote。

每位學生可分別於最多 5 台微軟或蘋果電腦及最多 5 台流動裝置免費下載及安裝「Microsoft Office 365 專業增強版」及「Office 行動裝置版」。

「Microsoft Office 365 專業增強版」帳戶之登入名稱及密碼將於九月以便條形式通知每位學生。

如有查詢，請與資訊科技組聯絡。

## 8. 有關個人資料(照片及影片)之處理

學校活動期間或會拍攝學生的照片及影片。校方會透過各種渠道，以印刷及數碼形式發佈這些照片及影片，作宣傳有關活動之用。學生的照片及影片並有機會上載到學校網頁和/或用作其他符合公眾利益的用途上。





Po Leung Kuk Ngan Po Ling College

保良局顏寶鈴書院

26 Sung On Street, Tokwawan, Kowloon

九龍土瓜灣崇安街 26 號

Tel 電話：2462 3932

Fax 傳真：2462 3929

### 9. 學生(團體人身)意外保險

為了給學生提供保障，保良局已為所有保良局屬校購買學生(團體人身)意外保險。

保險適用於學生參與保良局屬校舉辦的所有學校活動，包括保良局舉辦的正常課堂及休息時間，保險範圍亦延申至投保人直接由住所往返活動地點。

保險計劃受保險公司正式保單中的詳細條款和條件約束。學校只於索償程序中作出協助，索償資格和承保金額取決於保險公司的最終決定。

如需索償，請在意外發生後 7 天內通知學校，並提供醫療報告和所有相關文件。

### 10. 退學政策

「退學通知書」是家長通知本校有關學生退學的正式文件。本校不接受透過其他方式如電子郵件、信件或口頭通知等辦理學生退學。如家長/監護人計劃為子女辦理退學，請填寫「退學通知書」，並須於生效日前至少一個月交回校務處。本校學費以分期付款方式收取，如學生中途退學，已繳交退學月份之學費將不予退還。

如有查詢，請與學生事務組聯絡。

此致

貴家長/監護人

學生事務組啟

二零二二年七月二十六日





Po Leung Kuk Ngan Po Ling College

保良局顏寶鈴書院

26 Sung On Street, Tokwawan, Kowloon

九龍土瓜灣崇安街26號

Tel 電話: 2462 3932 Fax 傳真: 2462 3929

Ref: Sch/Par/173/2122

26 July 2022

Dear Parents/Guardians,

**School Policies Concerning Examinations, Learning and Teaching, and Library (2022/2023)**

**1. Test/Examination Policies**

**General Regulations**

- When a student is unable to sit for the test/examination, he/she should inform the General Office by phone (24623932) before 8:00 a.m. The student should submit a medical certificate or other related documents to the General Office on the day the student returns to the school.
- For students applying for personal leave, the student should submit a parent letter to the General Office one week before the test/examination commences.
- Students should return home for revision immediately after school on test/examination days.
- In case of adverse weather conditions, students should pay attention to the announcements made on television or radio. If the Education Bureau announces the closure of schools, the test/examination on that day is to be rescheduled while the test/examination to be held the next day remains unchanged. If the school is closed on the last day of the test/examination period, the test/examination is to be postponed to the next school day.
- Students are required to arrive at the examination venue 20 minutes before the start of the test/examination. They must keep quiet at all times. Upon entering the test/examination venue, students should take the designated seat.
- Students are allowed to place only the stationery necessary for the subject on the desk.
- Students are not allowed to converse with others in the test/examination venue and they should follow all test/examination regulations.
- Students are not allowed to start writing before the invigilator announces the start of the test/examination.

Ref: Sch/Par/173/2122



Po Leung Kuk Ngan Po Ling College

保良局顏寶鈴書院

26 Sung On Street, Tokwawan, Kowloon

九龍土瓜灣崇安街 26 號

Tel 電話: 2462 3932 Fax 傳真: 2462 3929

- Students should raise their hand and report to the invigilator any problems found during the test/examination.
- Students must stop writing when the invigilator announces the end of the test/examination.
- Students are not allowed to leave the test/examination venue without permission during the test/examination.
- Upon the completion of the first session of the test/examination, students should keep quiet and wait for the second session to begin.
- Cheating is a serious offence. If a student is caught cheating, his/her paper may be given no marks. Disciplinary penalties will also be imposed.

#### Lateness

- Students who are late are required to first report to the General Office and then go to the test/examination venue.
- Latecomers should enter the test/examination venue according to the instructions given by the invigilator.
- Latecomers would not be given any additional time allowance.
- No students are allowed to enter the test/examination room 30 minutes after the start of the test/examination.

#### Absence

- If a student is absent from a test/examination due to medical condition(s), he/she must submit an approved medical certificate or else the corresponding paper will score zero mark.
- For approved absence cases, score will be projected by students' ranking in the preceding test/examination in the same academic year and the scores of the other students in the current assessment. 80% of the projected score will be counted in the overall scores.
- Projection will base on the formative assessment ranking if students are absent in the first term test.



Po Leung Kuk Ngan Po Ling College

保良局顏寶鈴書院

26 Sung On Street, Tokwawan, Kowloon

九龍土瓜灣崇安街 26 號

Tel 電話: 2462 3932 Fax 傳真: 2462 3929

## **2. Promotion Policy**

- Total average marks reach 50% or above (Form 1- Form 4).
- Total average marks reach 45% or above (Form 5).
- Satisfactory conduct.

## **3. Drop Subject Policy**

- Senior form students are allowed to drop one elective subject after the F.4 first term examination.

## **4. Library Policy**

- Each student may borrow a maximum of six library materials.
- All borrowed library materials must be returned to the library within the loan period. See below for the loan periods of different library materials.

Library materials	Loan period
Books	14 days
Back issues of periodicals	14 days
Multimedia materials	7 days
• Past public exam papers	7 days

- Each student may renew a loan library material once on or before the due date.
- An overdue fine, at a rate of HK\$1.5 per day, is imposed on each loan library material returned late. A ceiling of overdue fine, HK\$130, is set on each overdue item. The overdue fine should be settled as soon as possible.
- Only the holder of student identity card is eligible to use the library services. A student must not lend or transfer his/her student identity card to any other person for library purposes.
- A student should, before leaving the library, ensure that the library item issued to him/her on loan is complete and undamaged.



Po Leung Kuk Ngan Po Ling College

保良局顏寶鈴書院

26 Sung On Street, Tokwawan, Kowloon

九龍土瓜灣崇安街 26 號

Tel 電話: 2462 3932 Fax 傳真: 2462 3929

- In case of loss of or unrepairable damage caused on a borrowed library material, the borrower must immediately report to the librarian who will consider if it is necessary to replace such library material or the whole set of library material in which the item forms a part. If the replacement is necessary, the borrower is liable to pay to the school a sum of money comprising the price of the replaced item(s) and a surcharge amounting to 20% of the price of such material as administration fee.
- During the test/examination period, loan service is suspended, while other library services remain available.
- See below for the opening hours of library:

	Opening hours
Monday to Friday (School Days)	07:30 – 17:00
Monday to Friday (School Holidays)	10:00 – 15:00
Saturday	09:00 – 12:00
Sunday and Public Holidays	Closed

Should you have any queries, please contact Academic Affairs Committee.

Yours faithfully,



Academic Affairs Committee





Po Leung Kuk Ngan Po Ling College

保良局顏寶鈴書院

26 Sung On Street, Tokwawan, Kowloon

九龍土瓜灣崇安街26號

Tel 電話: 2462 3932 Fax 傳真: 2462 3929

Ref: Sch/Par/173/2122

敬啟者：

有關測考、學與教及圖書館政策(2022/2023)

1. 測考安排

一般守則

- 測驗/考試當天，考生若因事或因病缺席，須於當天早上八時正前致電校務處(24623932)請假。考生須呈交有效醫生證明文件或其他相關文件，辦理請假事宜。
- 考生若須於測驗/考試期間申請事假，家長/監護人須準備家長信，於測驗/考試前一星期，由考生呈交校務處辦理請假事宜。
- 測驗/考試期間，考生放學後應立刻回家溫習。
- 若遇到風暴或惡劣天氣，考生應留意電視或電台宣布。若教育局宣布學校停課，該日的測驗/考試將另作安排，而翌日的測驗/考試則如期舉行；如測驗/考試最後一天停課，則該日測驗/考試將順延一天舉行。
- 考生須於每節開考前二十分鐘到達試場，並保持肅靜。進入試場後，考生須按照指定之座位編號就座。
- 考生之桌面上只可有該節所需之文具。
- 考生不得在試場內交談或作出違反試場規則的行為。
- 監考老師未宣布開考前，考生不得作答。
- 測驗/考試進行期間，如有任何問題，考生應舉手告知監考老師。
- 當監考老師宣布考試完畢，考生應立即停止書寫。
- 測驗/考試進行期間，考生不得擅自離開試場。
- 每節測驗/考試完畢，考生應保持安靜，等待第二節測驗/考試開始。



Po Leung Kuk Ngan Po Ling College

保良局顏寶鈴書院

26 Sung On Street, Tokwawan, Kowloon

九龍土瓜灣崇安街 26 號

Tel 電話: 2462 3932 Fax 傳真: 2462 3929

- 任何情況下考生均不可作弊；如考生於測驗/考試作弊，該卷分數可被取消，並須接受紀律處分。

#### 遲到

- 遲到考生須到校務處登記，然後到編定之試場應考。
- 遲到之考生須由監考老師指示進入試場。
- 在任何情況下，遲到考生將不會獲得額外補時。
- 考生於開考後三十分鐘不可進入試場。

#### 缺席

- 如考生因病缺席測驗/考試，必須呈交有效醫生證明文件，否則應考卷別將作零分計算。
- 若屬獲校方批准的病假或事假，校方將根據學生前一次中期測驗/考試的排名和該次評估中其他學生的分數進行比對及預測，該次測考之成績將以預測分數之百分之八十計算。
- 如果學生在上學期測驗缺席，則根據持續性評估排名進行預測。

### 2. 升級政策

- 總平均分達百分之五十或以上（中一至中四）
- 總平均分達百分之四十五或以上（中五）
- 操行良好

### 3. 退修科目政策

- 高中學生可以在中四上學期考試後申請退修一科選修科目。

### 4. 圖書館守則

- 每位學生最多可外借 6 項圖書館資料。



Po Leung Kuk Ngan Po Ling College

保良局顏寶鈴書院

26 Sung On Street, Tokwawan, Kowloon

九龍土瓜灣崇安街 26 號

Tel 電話: 2462 3932 Fax 傳真: 2462 3929

- 所有圖書館資料必須在借用期內交還圖書館。下表見各項圖書館資料之借期:

圖書館資料	借用期
圖書	14 日
逾期期刊	14 日
多媒體資料	7 日
歷屆公開考試試題專輯	7 日

- 每位學生可於到期日或之前續借圖書館資料一次。
- 逾期歸還的外借圖書館資料，每一項均須繳付罰款。每項資料的逾期罰款為每天港幣 1.5 元，而上限為港幣 130 元。逾期罰款須盡快清還。
- 只有學生證持有人方可使用圖書館服務。學生證持有人不得將其學生證借出或轉讓予他人使用圖書館服務。
- 學生在離開圖書館前，須確定其外借的圖書館資料完整及沒有損壞。
- 圖書館資料如有遺失或遭受嚴重損壞，借用人須立即向圖書館館長報告。館長會考慮是否須要重新添置該項資料或重新添置包含該項資料在內的整套圖書館資料。如添置屬必須，借用人須向學校繳付一筆款項，而該款項包括該圖書館資料的價值及相等於該圖書館資料價值的 20% 作行政費用。
- 在測驗及考試期間，圖書館會暫停外借服務，而其他服務則維持不變。
- 下表見圖書館之開放時間:

	開放時間
星期一至五(上課日)	07:30 - 17:00
星期一至五(學校假期)	10:00 - 15:00
星期六	09:00 - 12:00
星期日及公眾假期	休館

如有查詢，請與教務組聯絡。

此致

貴家長/監護人

教務組啟

二零二二年七月二十六日

Ref: Sch/Par/173/2122





Po Leung Kuk Ngan Po Ling College

保良局顏寶鈴書院

26 Sung On Street, Tokwawan, Kowloon

九龍土瓜灣崇安街 26 號

Tel 電話：2462 3932 Fax 傳真：2462 3929

Ref: Sch/Par/174/2122

26 July 2022

Dear Parents / Guardians,

**Reminders on School Rules and the Use of Mobile Computer Devices Policy**

Every student assumes the responsibility in observing the school rules and use of mobile computer device policy. To ensure a smooth school commencement, make sure you read through the student handbook and school regulations, and supervise your child to observe and follow the regulations closely.

**1. Uniform and Appearance**

To foster a positive school ethos and a good discipline culture, students should always keep their school uniforms and appearance neat and simple both inside and outside the campus. The requirements of school uniforms and appearance have been stated clearly in the student handbook and school regulations booklet.

**2. Use of Student ID Card**

To ensure students' safety and campus security, we have implemented a strict checking-in and out policy at the campus. All students are required to check in and out with their student ID cards whenever they enter or leave the campus. Parents can check their attendance records via the eClass system simultaneously. Students will risk a disciplinary penalty of up to a minor demerit if they fail to comply with the rule.

**3. The Use of Mobile Computer Devices Policy**

To create a conducive learning environment, students can only use their mobile devices (e.g. tablets, laptops or smartphones) in classrooms or specific locations under teacher's supervision. The devices are solely used for learning purposes. Students must switch off all their mobile devices before they enter the campus, and place them in their lockers/drawers before the first lesson. Students can only take out the devices for learning after gaining teacher's permission. Possession/use/display of items that are unrelated to studies (e.g. portable game players, iPods, etc.) is strictly prohibited. The use of mobile devices is strictly prohibited during special school functions (e.g. Sports Days, Swimming Gala, etc.). Students have to switch off their mobile computer devices before entering the corresponding venue. Students will risk a disciplinary penalty if they fail to comply with the rules. The school reserves the right to forfeit any of the above items. Parents or guardians need to retrieve the collected items at the school in person. Please supervise your child to strictly abide by the related policy and avoid bringing unnecessary items back to school.

Should you have any queries, please contact Discipline Committee.

Yours faithfully,



Discipline Committee

Ref: Sch/Par/174/2122



Po Leung Kuk Ngan Po Ling College

保良局顏寶鈴書院

26 Sung On Street, Tokwawan, Kowloon

九龍土瓜灣崇安街 26 號

Tel 電話：2462 3932 Fax 傳真：2462 3929

Ref: Sch/Par/174/2122

敬啟者：

一般校規提醒及使用流動電腦裝置規則

所有學生需要嚴格遵守校規及使用流動電腦裝置的規則。為預備開學，請閣下仔細閱讀學生手冊及本校校規，並協助監管貴子弟遵守有關規定。

1. 校服及學生儀容

為維持淳樸校風，學生在校內及校外都應保持校服儀容整齊。校方對於學生的校服儀容基本要求已詳列在學生手冊的「校規」部分及「校規」本子。希望閣下能夠理解保持校服儀容端莊整潔的重要性，並協助貴子弟遵守相關規定。

2. 學生證使用事宜

為保障學生安全及加強學校保安，所有學生進入或離開校園時均需使用學生證進行電腦系統登記，閣下可以透過 eClass 系統查閱貴子弟出席資料。倘若貴子弟在進出校園時，未有遵守相關規定，可被記缺點一次。

3. 在校園內使用流動電腦裝置規則

為締造更良好的學習環境，貴子弟只能在老師的監督下，在課室內或指定地點使用流動電腦裝置（如：平板電腦、手提電腦或智能電話）作學習用途，貴子弟必須在進校前關閉所有流動電腦裝置，並在第一節課前將其存放到個人儲物櫃/抽屜內並鎖好，待有學習需要時才取用；其他與學習用途無關的電子產品，如隨身聽及電子遊戲機等則嚴禁帶回學校。至於在大型學校活動中（如：陸運會、水運會等）貴子弟必須在進入會場前確保流動電腦裝置已經關掉，在會場內嚴禁使用手提電話。學生如違反以上規定，校方有權代為保管有關物品，並予以紀律處分，並請閣下到校領取。閣下應監管及教導貴子弟嚴格遵守有關校規，避免攜帶與學習無關之物品回校。

如有任何查詢，請與訓導組聯絡。

此致

貴家長/監護人

訓導組啟

二零二二年七月二十六日



**Po Leung Kuk Ngan Po Ling College**  
**2022-2023 Textbook List**  
**IB Year 1**

**Important Information - Please Read Carefully**

All Textbook pre-orders has to be placed at:

**[bookshop4u.com/npl](http://bookshop4u.com/npl)**

No order forms will be collected at school/bookstore

Web Order Deadline: **On or before 5th August, 2022 (Friday)**

Books Collection Date: **25th August, 2022 (Thursday)**

Enquiry: [npl.order@bookshop4u.com](mailto:npl.order@bookshop4u.com)

Discount Rate: **10-12% Discount applied for PLK NPL College**

Title	Author	Publisher	ISBN	List Price	Disc. Price
<b>Chinese A: Literature</b>					
IBDP 中文A文學課程書面作業及試卷 (2) 7分範文點評 (繁體版) [Out of print]	李萍, 蘇媛	三聯	9789620438769		
1 DP 中文A文學課程學習指導 (第三版) (繁體版) [For reference, optional to buy]	禹慧靈	三聯	9789620444432	228	205
<b>Chinese A: Languages &amp; Literature</b>					
IBDP 中文A文學課程書面作業及試卷 (2) 7分範文點評 (繁體版) [Out of print]	李萍, 蘇媛	三聯	9789620438769		
2 DP 中文A語言與文學課程試卷 (1) 非文學文本分析 亮	李連莉、徐亮	三聯	9789620449482	128	115
3 DP 中文A語言與文學課程學習指導 (第二版) (繁體版) [For reference, optional to buy]	禹慧靈	三聯	9789620444456	228	205
<b>Chinese B</b>					
4 Chinese Made Easy 5 Textbook (Traditional character Version) (3rd Edition)	Yamin Ma & Xinying Li	三聯	9789620437021	228	205
[For SL only] [Only if Not Purchased in F4]					
5 Chinese Made Easy 6 Textbook (Traditional character Version) (3rd Edition) [For both SL and HL]	Yamin Ma & Xinying Li	三聯	9789620437038	228	205
6 Chinese Made Easy 7 Textbook (Traditional character Version) (3rd Edition) [For HL only]	Yamin Ma & Xinying Li	三聯	9789620437045	228	205
<b>French B</b>					
7 Le monde en français French B for the IB Diploma Coursebook with Digital Access (2 Years) (2nd Edition) [Only if Not Purchased in F5]	Abiroux & Chretien	Cambridge	9781108760416	557	501
8 Le monde en français French B for the IB diploma Workbook (2nd Edition)	Abiroux & Chretien	Cambridge	9781108440561	168	151
<b>English A: Language &amp; Literature</b>					
9 English A: Language and Literature for the IB Diploma Coursebook with Cambridge Elevate edition (2019 Edition)	Brad Philpot	Cambridge	9781009190886	449	404
<b>English B</b>					
10 English B for the IB Diploma English B Coursebook with Digital Access (2nd Edition, June 2018)	Brad Philpot	Cambridge	9781108760300	392	352

11	Lord of the Flies (Educational Edition)	Golding	Faber	9780571295715	116	102
<b>Mathematics: Analysis &amp; Approaches</b>						
12	Mathematics Core Topics HL Book 1	Haese, Humphries	Haese	9781925489583	492	432
	[Only if not purchased in F4]					
13	Mathematics Analysis and Approaches HL Book 2 [For HL only]	Haese, Humphries	Haese	9781925489590	660	581
14	Mathematics Analysis and Approaches SL Book 2 [For SL only]	Haese, Humphries	Haese	9781925489569	586	516
<b>Geography</b>						
15	Geography IB Course Companion (2nd Edition) [Only if Not Purchased in F4]	Nagle and Cooke	Oxford	9780198396031	536	482
16	Geography for the IB Diploma Study and Revision Guide HL Core Extension : HL Core Extension [For HL only]	Simon Oakes	Hodder Education	9781510403543	300	264
17	Geography for the IB Diploma Study and Revision Guide SL and HL Core: SL and HL Core [For reference, optional to buy, only if not purchased in F4]	Simon Oakes	Hodder Education	9781510403550	290	255
18	Planet Geography - Our Planet's Geophysical Hazards: 2nd Edition (for both SL & HL) [For reference, optional to buy, only if not purchased in F4]	Stephen Cordington	Solid Star Press	9780648993711	250	220
19	Planet Geography - Our Planet's Urban Environment: 2nd Edition (for both SL & HL) [For reference, optional to buy]	Stephen Cordington	Solid Star Press	9780648993742	400	352
20	Planet Geography - Our Planet's Food and Health: 2nd Edition (For HL only) [For reference, optional to buy]	Stephen Cordington	Solid Star Press	9780648993735	344	303
<b>Economics</b>						
21	Economics for the IB Diploma Coursebook with Digital Access (2 Years) (3rd Ed) [Only if Not Purchased in F4]	Elie Traggakis	Cambridge	9781108847063	531	478
22	IBDP Conquering 7 Series: Economics (2022 Edition) [For reference, optional to buy]	Anselm Kwok	L & T	9789887750079	332	299
	[Only if Not Purchased in F4]					
<b>Physics</b>						
23	Pearson Bacalaureate Standard Level Physics (2nd Ed)	Hamper	Pearson	9781447959083	521	469
24	Pearson Bacalaureate Higher Level Physics (2nd Ed)	Hamper	Pearson	9781447959021	632	569
	OSC IB Study & Revision Guides (For the IBDP) Physics Higher Level (3rd Edition) [Out of print]	Pat Roby		97811910689189		
25	Physics Practical Scheme of Work - For use with the IB Diploma Programme: First Assessment 2016 2nd Ed	Michael J. Dickinson	Cambridge Independent Pub	9781494987893	248	218
26	Sears and Zemansky's University Physics with Modern Physics Technology Update (15th Edition, Pearson New Int'l Ed)	Young & Freedman	Pearson	9781292314730	506	455
<b>Chemistry</b>						
27	Chemistry for the IB Diploma Coursebook (2nd Edition) [Only if Not Purchased in F4]	Steve Owen	Cambridge	9781107622708	523	471
28	Chemistry for the IB Diploma Workbook [For reference, optional to buy]	Jacqueline Paris	Cambridge	9781316634950	238	214
	[Only if Not Purchased in F4]					



29	Chemistry for the IB Diploma Exam Preparation Guide [For reference, optional to buy] [Only if Not Purchased in F4]	S. Owen and C. Martin	Cambridge	9781107495807	366	329
	Chemistry HL/SL Study Guide and Exam Practice for the IB Diploma [Out of print] [For both HL and SL for reference]	O. Wong, I. Lui	CNA Academy Limited	9789881688800		
30	Pearson Bacalaureate Higher Level Chemistry (2nd Ed) [For HL only] [For reference, optional to buy]	C. Brown, M. Ford	Pearson	9781447959755	854	767
31	Pearson Bacalaureate Standard Level Chemistry (2nd Ed.) [For SL only] [For reference, optional to buy]	C. Brown, M. Ford	Pearson	9781447959069	517	465
<b>Biology</b>						
32	IB Biology Course Book: Oxford IB Diploma Programme [For HL & SL] [Only if not purchased in F4]	Allott & Mindorf	Oxford	9780198392118	598	538
<b>Visual Arts</b>						
	No Textbook Required					
<b>Theory of Knowledge</b>						
33	Theory of Knowledge for the IB Diploma Course Guide with Digital Access (2 Years) [For reference, optional to buy]	Heydom & Jesudason	Cambridge	9781108865982	539	485
<b>Creativity, Activity, Service</b>						
	No Textbook Required					

#### Remarks:

Certain subjects may have different textbooks for High Level (HL) and Standard Level (SL), which is clearly marked. If a student is taking HL in a subject, he/she should order all textbooks with "HL". For students taking SL, he/she should order textbooks with "SL". Except for books differentiated by "HL" and "SL" (which students should pick only EITHER level), students will be required to buy all books under the subject.

#### Book Ordering Procedure from bookshop4u.com/np

- 1) Fill in the student information and select your upcoming level
  - 2) Select the books
  - 3) Select the collection method (School or Home Delivery (Delivery Charges \$150))
  - 4) Payments will be due at the time of book collection (Cash Payment)
- \* All late orders will result in additional 5-6 weeks lead time for books collection

#### Books collection (25/8/2022 (Thur) 10am-1pm):

Location: Po Leung Kuk Ngan Po Ling College, 26 Sung On St, To Kwa Wan

Time: : 10:00 – 11:00 (BYP)

11:00 – 12:00 (IB Year 1)

12:00 – 13:00 (IB Year 2)

#### Payment:

Cash payments at the time of book collection.

#### Delivery Service:

Home Delivery by SF-Express (Delivery Charges \$150)

#### Late Pick up (Please Email us for the arrangement)

All late pick up will have to visit our Wong Chuk Hang Branch for pick up after 25/8.

Address: 22F, D1, Gee Chang Hong Centre, 65 Wong Chuk Hang Road, Hong Kong

\* No plastic bags will be provided. Please prepare your own shopping bag.



PLK NGAN PO LING COLLEGE

(September 2022)

Lunch box supplier: Vitaland Services Ltd.

Student Name:

class :

no. ( )

(September 2022)

Date	Please fill in	A (HK\$24.00)	B (HK\$24.00)	C (HK\$24.00)	D (HK\$26.00)	E (HK\$29.00)
1/9 Thu				NIL		
2/9 Fri				NIL		
5/9 Mon	Rice w/ Pork Chop & Ham in Garlic Sauce	Rice w/ Braised Spare ribs & Black Fungus	Rice w/ Pumpkins in White Sweet Corn Sauce	Rice w/ Chicken Fillet in Black Pepper Sauce	Stir Fried Rice w/ Spiced Pork Cubes	
6/9 Tue	Rice w/ Chicken Leg in Onion Sauce	Spaghetti w/ Diced Beef in Russian Style	Green Salad + Fruit Cup	Rice w/ Fresh Tomatoes & Beef	Stir-Fried Rice in Tomato Sauce	
7/9 Wed	Rice w/ Curry Beef Brisket	Rice w/ Braised Pumpkin & Chicken	Bun w/ Tomatoes & Lettuce + Sweet Corn Cup	Rice w/ Chicken in Portuguese Sauce	Silver Needle Noodles w/ Shrimp & Ham	
8/9 Thu	Rice w/ Curry Pork in Japanese Style	Rice w/ Chicken in Sweet Corn Sauce	Rice w/ Braised Assorted Mushrooms & Tofu	Rice w/ Pork Patty in Sweet Corn Sauce	Stir-Fried Udon w/ Beef	
9/9 Fri	Rice w/ Curry Chicken & Potatoes	Rice w/ Sauteed Bean Curd in Szechuan Style	Rice w/ Buddha's Delight	Rice w/ Chicken Fillet & Tomatoes	Stir-Fried Rice Noodle w/ Pork	
12/9 Mon			NIL			
13/9 Tue	Rice w/ Curry Chicken in Japanese Style	Rice w/ Diced Pork in Sweet Corn Sauce	Rice w/ Shredded Shiitake Mushrooms & Tofu	Spaghetti Beef Bolognese w/ Fresh Tomatoes & Corn	Stir-Fried Rice w/ BBQ Pork, Corn & Fried Egg	
14/9 Wed	Rice w/ Pork Chop & Luncheon Meat in Black Pepper Sauce	Rice w/ Beef & Scrambled Eggs	Green Salad + Fruit Cup	Rice w/ Steak in Black Pepper Sauce	Stir-Fried Spaghetti w/ Pork	
15/9 Thu	Rice w/ Beef in Borscht Sauce	Rice w/ Pork & Scrambled Eggs in Tomato Sauce	Rice w/ Braised Celtuce & Black Fungus	Rice w/ Chicken Fillet & Sausages in Curry Sauce	Stir-Fried Udon w/ Beef in Japanese Style	
16/9 Fri	Rice w/ Chicken Leg in Onion Sauce	Rice w/ Enoki Mushroom & Beef in Japanese Style	Shiitake Mushrooms & Carrot	Rice w/ Chicken Fillet in Garlic Sauce	Stir-Fried Rice Noodle w/ Satay Beef	
19/9 Mon	Rice w/ Chicken Fillet in Tomato Sauce	Rice w/ Shredded Beef in Black Pepper Sauce	Rice w/ Assorted Vegetables w/ Fresh Tomatoes	Spaghetti Beef Bolognese w/ Fresh Tomatoes	Stir-Fried Rice in Tomato Sauce	
20/9 Tue	Rice w/ Curry Beef Brisket	Rice w/ Assorted Vegetables & Pork	Green Salad + Fruit Cup	Rice w/ Chicken & Mushrooms in White Sauce	Stir-Fried Rice w/ Spiced Pork Cubes	
21/9 Wed	Rice w/ Chicken Wings & Minced Meat in Taiwanese Style	Rice w/ Satay Beef	Rice w/ Stir-Fried Spring Beans & Olive Pickles	Rice w/ Chicken Fillet in Portuguese Sauce	Stir-Fried Udon w/ Pork & Assorted Vegetables in Japanese Style	
22/9 Thu	Rice w/ Curry Chicken & Potatoes	Rice w/ Beef & Onions in Japanese Style	Rice w/ Eggplants & Tofu	Spaghetti w/ Assorted Mushrooms & Tuna	Stir-Fried Rice Noodle w/ Beef	
23/9 Fri	Rice w/ Braised Spare ribs & Potatoes in Oyster Sauce	Rice w/ Braised Pork, Tofu Puffs & Winter Melon	Rice w/ Assorted Mushrooms & Courgettes	Rice w/ Pork Chop & Sausages in Onion Sauce	Fried Rice Vermicelli in Singapore Style	
26/9 Mon	Rice w/ Chicken in Onion Sauce	Rice w/ Beef & Scrambled Eggs in Tomato Sauce	Rice w/ Braised Winter Melon, Tofu & Shiitake Mushrooms	Rice w/ Chicken Fillet in Black Pepper Sauce	Curry Stir-Fried Rice	
27/9 Tue	Rice w/ Braised Pumpkin & Chicken	Rice w/ Satay Enoki Mushroom & Beef	Bun w/ Tomatoes & Lettuce + Sweet Corn Cup	Rice w/ Shredded Beef in Russian Style	Stir-Fried Spaghetti w/ Shredded Chicken	
28/9 Wed	Rice w/ Curry Beef	Rice w/ BBQ Pork & Sausages	Green Salad + Fruit Cup	Spaghetti w/ Pork Patty in Sweet Corn Sauce	Stir-Fried Rice w/ Shrimp & Diced Chicken	
29/9 Thu	Rice w/ Swiss Chicken Leg	Rice w/ Beef in Black Pepper Sauce	Rice w/ Assorted Vegetables in Portuguese Sauce	Rice w/ Chicken Fillet & Tomatoes	Stir-Fried Rice Noodle w/ Pork	
30/9 Fri	Rice w/ Beef Brisket & Radish in Chu Hou Sauce	Rice w/ Pork & Scrambled Eggs in Tomato Sauce	Rice w/ Curry Assorted Vegetables	Rice w/ Pork Chop & Sausages in Onion Sauce	Stir-Fried Rice w/ Spiced Pork Cubes	

Please fill in	
School name:	PLK NGAN PO LING COLLEGE
Student name:	
class	
No.	
Lunch box fee :	
HK\$24.00 X ____ days = HK\$____	
HK\$26.00 X ____ days = HK\$____	
HK\$29.00 X ____ days = HK\$____	
Total Amount\$	_____
Payment :	
<input type="checkbox"/> Cheque	
~Payable to "VITALAND SERVICES LTD"	
<input type="checkbox"/> Bank in slip : Bank of China (HK)	
~A/C No. : 012-875-0-024073-4	
~A/C Name : VITALAND SERVICES LTD	
<input type="checkbox"/> Bank in slip : Bank of East Asia Limited	
~A/C No. : 514-40-33204-6	
~A/C Name : VITALAND SERVICES LTD	
<input type="checkbox"/> Payment via 7-11 Convenience Store	

Lunch box fee : A-C HK\$24.00 X \_\_\_\_ days = HK\$\_\_\_\_ + D HK\$26.00 X \_\_\_\_ days = HK\$\_\_\_\_

+ E HK\$29.00 X \_\_\_\_ days = HK\$\_\_\_\_ Total amount HK\$\_\_\_\_

(Late submission must not be accepted. Sorry for any inconvenience caused )

DEADLINE : 28/08/2022

Payment:  
A. Cheque (payable to "VITALAND SERVICES LTD").  
B. Bank in slip :

Name of Bank : Banks of China ( HK ) ; A/C No. : 012-875-0-024073-4 ; A/C Name : VITALAND SERVICES LTD  
Name of Bank : Banks of East Asia Limited ; A/C No. : 514-40-33204-6 ; A/C Name : VITALAND SERVICES LTD  
C. Pay by cash at any 7-11 Convenience Store ~ Please pay again in case of loss of receipt

# Please write down the school name, student name, class no. and telephone no. on the back of the receipt.  
Submit : Please return the right hand side order form and cheque /bank receipt / receipt of 7-11 to school teacher  
Leave Procedure : In case of absence or sick leave, students or parents have to inform school tuck shop Tel. : 6792 8961 before 9:00am

Please Note: Students are responsible for keeping their own meal card properly. If students have forgotten to bring or lost the meal card, no lunch meal will be re-arranged and no meal card will be replaced by Vitaland Services Limited. We are sorry for any inconvenience caused. Thank you for your attention.



(7-11店員請將整份訂購表交回顧客)

Payment via 7-11 Convenience : HK\$\_\_\_\_  
7-11(MCS) 000635425

( Please return the completed order to Vitaland, receipt will be issued after stamp verification)





保良局顏寶鈴書院

飯盒供應商：維他天地服務有限公司

學生姓名：

(2022年9月)

班別：

班號( )

日期	填寫餐款	A (HK\$24.00)	B (HK\$24.00)	C (HK\$24.00)	D (HK\$26.00)	E (HK\$29.00)
1/9	四			是日不用午膳		
2/9	五			是日不用午膳		
5/9	一	香蒜汁豬扒火腿飯	乳香雲耳炆排骨飯	粟米白汁南瓜飯	黑椒雞扒飯	五香肉丁炒飯
6/9	二	燒汁雞腩飯	俄國牛柳粒飯	田園沙律拼生果杯	鮮茄牛肉飯	西炒飯
7/9	三	咖喱牛腩飯	南瓜炆雞球飯	蕃茄生菜包拼粟米杯	葡汁雞皇飯	鮮蝦火腿銀針粉
8/9	四	日式咖喱豚肉飯	粟米汁雞球飯	雙菇炆豆腐飯	粟米汁豬柳片飯	乾炒牛肉烏冬
9/9	五	咖喱薯仔雞球飯	麻婆豆腐飯	羅漢上素飯	鮮茄雞扒飯	乾炒肉片河
12/9	一			是日不用午膳		
13/9	二	日式咖喱雞球飯	粟米肉粒飯	冬菇絲扒豆腐飯	粟米鮮茄肉醬意粉	粟米叉燒蛋炒飯
14/9	三	黑椒豬扒餐肉飯	滑蛋牛肉飯	田園沙律拼生果杯	黑椒牛扒飯	乾炒肉片意粉
15/9	四	羅宋牛肉飯	鮮茄滑蛋肉片飯	雪耳高笋飯	咖喱雞扒腸仔飯	日式肥牛炒烏冬
16/9	五	燒汁雞腩飯	日式金菇肥牛飯	枝竹扒冬菇蘿蔔飯	蒜茸汁雞扒飯	沙撈牛肉炒河
19/9	一	鮮茄雞柳飯	黑椒牛柳絲飯	鮮菇扒時菜飯	鮮茄肉醬意粉	西炒飯
20/9	二	咖喱牛腩飯	錦繡肉粒飯	田園沙律拼生果杯	白汁蘑菇雞皇飯	五香肉丁炒飯
21/9	三	台式肉燥雞中翼飯	沙爹牛肉飯	檳菜四季豆飯	葡汁雞扒飯	日式野菜豚肉炒烏冬
22/9	四	咖喱薯仔雞球飯	日式洋葱牛肉飯	茄子炆豆腐飯	雜菌吞拿魚意粉	乾炒牛河
23/9	五	蠔油薯仔炆排骨飯	冬瓜豆卜肉片飯	雜菌炒翠肉瓜飯	燒汁豬扒腸仔飯	星洲炒米
26/9	一	和風照燒汁雞球飯	鮮茄滑蛋牛肉飯	冬瓜豆腐冬菇飯	黑椒雞扒飯	咖喱炒飯
27/9	二	南瓜炆雞球飯	沙爹金菇肥牛飯	蕃茄生菜包拼粟米杯	俄國牛柳絲飯	乾炒雞絲意粉
28/9	三	咖喱牛肉飯	叉燒腸仔飯	田園沙律拼生果杯	粟米汁豬柳片意粉	鮮蝦雞粒炒飯
29/9	四	瑞士汁雞腩飯	黑椒牛肉飯	葡汁四蔬飯	鮮茄雞扒飯	乾炒肉片河
30/9	五	柱侯羅蔔炆牛腩	鮮茄滑蛋肉片飯	咖喱雜菜飯	燒汁豬扒腸仔飯	五香肉丁炒飯

本月午膳飯盒費用：A-C HK\$24.00 X \_\_\_\_ 天 = HK\$ \_\_\_\_ + D HK\$26.00 X \_\_\_\_ 天 = HK\$ \_\_\_\_ 截止繳交日期：28/08/2022  
+ E HK\$29.00 X \_\_\_\_ 天 = HK\$ \_\_\_\_ 實交HK\$ \_\_\_\_ (請同學依時繳交，逾期恕不受理，敬請原諒)

付款方式：

- A. 支票(期票恕不接受) ~ 抬頭請寫「維他天地服務有限公司」  
B. 銀行入數 ~ 請到以下任何一間銀行分行繳款：  
中國銀行(香港)：戶口號碼：012-875-0-024073-4；戶口名稱：維他天地服務有限公司  
東亞銀行：戶口號碼：514-40-33204-6；戶口名稱：維他天地服務有限公司  
C. 7-11付款 ~ 請小心保存機印收據，如有遺失，請重新繳付  
# 請於支票/銀行入數存根/7-11收據背後寫上校名、學生姓名、班別及聯絡電話  
遞交方法：同學請把右方之訂購表連同支票/銀行入數存根/7-11機印收據交回班主任  
請假手續：同學們如因病假缺席，請在該天早上9:00前致電本公司取消訂飯。電話：6792 8961

應繳付7-11便利店金額：HK\$ \_\_\_\_  
7-11 (MCS) 000635425

(7-11店員請將整份訂購表交回顧客)



【請保留整張訂購表交回維他天地職員，待蓋印後以作收據憑證】

請各同學注意：如忘記攜帶或遺失飯卡，本公司將不會後補午餐及補發飯卡，請大家妥善保存個人飯卡。不便之處，敬請見諒。

(2022年9月)

校名：保良局顏寶鈴書院

姓名：

班別：

班號：

飯盒費用：

HK\$24.00 X \_\_\_\_ 天 = HK\$ \_\_\_\_

HK\$26.00 X \_\_\_\_ 天 = HK\$ \_\_\_\_

HK\$29.00 X \_\_\_\_ 天 = HK\$ \_\_\_\_

實交HK\$ \_\_\_\_

請選擇付款方式：

- ☐ 支票(期票恕不接受)  
抬頭請寫「維他天地服務有限公司」  
☐ 中國銀行(香港)  
戶口號碼：012-875-0-024073-4  
戶口名稱：維他天地服務有限公司  
☐ 東亞銀行  
戶口號碼：514-40-33204-6  
戶口名稱：維他天地服務有限公司  
☐ 7-11付款





Po Leung Kuk Ngan Po Ling College

保良局顏寶鈴書院

26 Sung On Street, Tokwawan, Kowloon

九龍土瓜灣崇安街 26 號

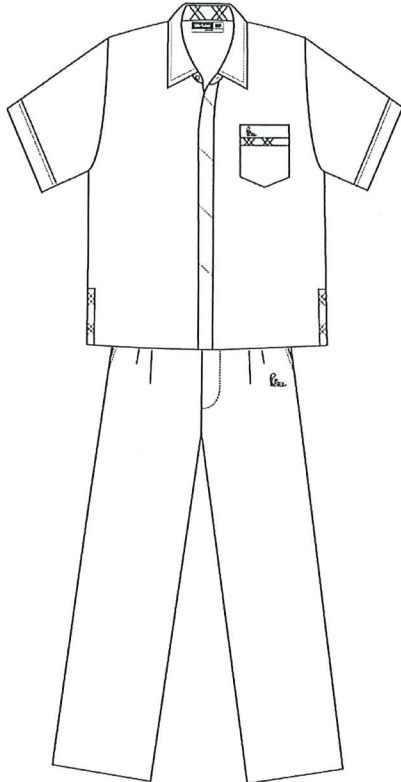
Tel 電話：2462 3932

Fax 傳真：2462 3929

### Summer School Uniform 夏季校服

#### Form 4 to Form 6 中四至中六

##### Boys 男生



White Short sleeves shirt with green checkers in pocket and school logo embroidery

白色短袖襯衫，袋子配綠色格子及繡花校徽

Black belt 黑色皮帶

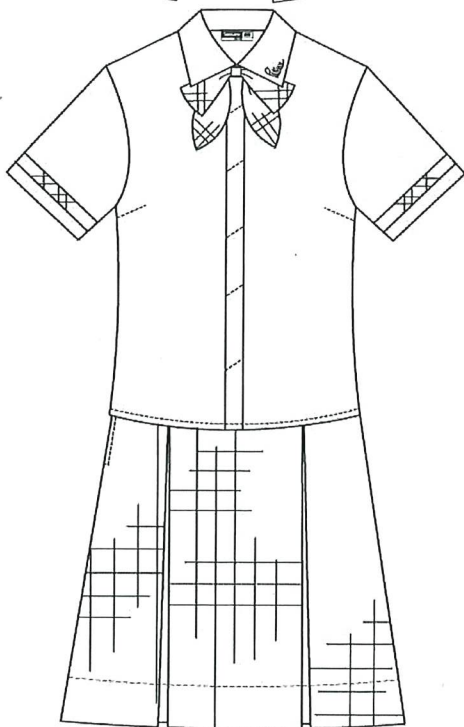
Dark grey trousers with green checkers trimming and school logo embroidery

深灰色直腳長褲，袋子配綠色格子及繡花校徽

Plain black or dark grey socks 黑色或深灰色襪

Black leather shoes 黑色學生皮鞋

##### Girls 女生



White Short sleeves shirt with green checkers, button on bow and school logo embroidery

白色短袖襯衫配綠色格子捆邊、蝴蝶結及繡花校徽

Green checkered pleated knee-length skirt with upper and lower body lining

綠色格子及膝裙連全色底裙

White short socks 白色短襪

Black leather shoes 黑色學生皮鞋

Parents and students are free to choose the suppliers of school uniform.

家長和同學可自由選用任何校服供應商。

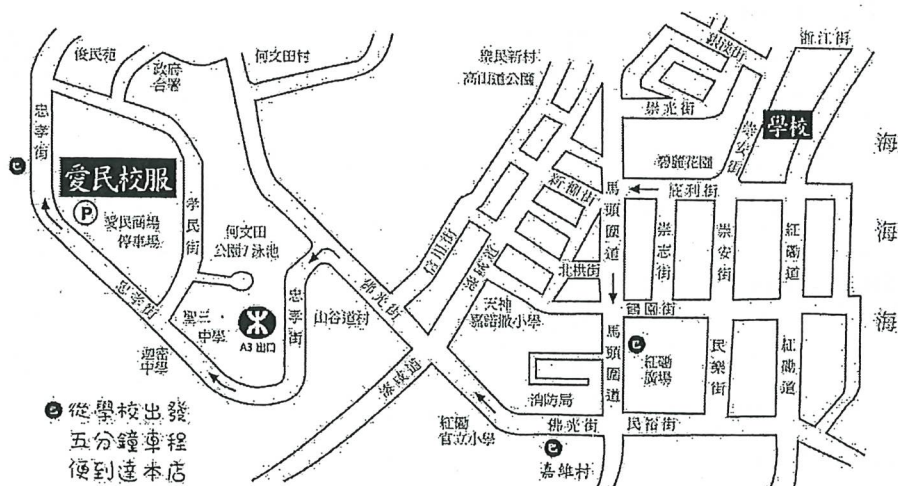
**www.oiman.com**

**法定勞工假休息 Closed on statutory holidays**

**Po Leung Kuk Ngan Po Ling College – Notice of purchase of summer school uniform**

Summer school uniforms are now available in our store at Oi Man Plaza, Ho Man Tin.

1. 校服商門市位於何文田愛民廣場，地點鄰近保良局顏寶鈴書院。紅磡馬頭圍道有 41 或 45 號巴士，紅磡嘉維村的佛光街巴士站（消防局對面）亦有 7B/8/41/45 巴士及 8 號綠色小巴，5 分鐘直達本店。Our shop is located at Oi Man Plaza, Ho Man Tin. It is just 5 minutes' drive from the school. Our shop can also be accessed by bus (lane number: 7B / 8 / 41 / 45) and minibus (lane number: 8) from Hung Hom.
2. 從港鐵何文田站 A3 出口步行至本店約需 8 分鐘。愛民廣場設有停車場。Our shop is 8-minute walk from exit A3 of Ho Man Tin MTR station. Oi Man Plaza provides parking spaces.
3. 門市只接受現金付款，商場設有櫃員機。Our shop only accepts cash. ATM service is available in Oi Man Plaza.
4. 如家長清楚所需校服尺碼，可透過 WhatsApp 落單，完成付款後校服會透過順豐速遞寄送到指定地點。運費會以到付方式由收貨人支付，詳情請瀏覽 [www.oiman.com](http://www.oiman.com)。(WhatsApp 電話落單：59618807) Orders may be placed for purchases through WhatsApp if parents are sure about the uniform sizes. The goods will be delivered to the designated locations by SF Express. The transportation fee will be paid by the consignee upon the receipt of goods. For details, please visit [www.oiman.com](http://www.oiman.com) . (WhatsApp Ordering No. : 59618807)
5. 如有查詢，請直接與校服公司聯絡。(電話: 2715 4782) For any enquiry, please call the uniform company. (Tel: 2715 4782)



愛民校服逾四十年歷史，質料經嚴謹挑選，布料經過特別處理，確保不褪色、不起毛粒或縮水。布料均合乎國際安全標準及規格。



# 愛民校服時裝公司

Oi Man School Uniform & Fashion Co.

G/F, 18B, Oi Man Plaza, Oi Man Estate, Ho Man Tin, Kowloon.

九龍何文田愛民村愛民廣場地下 18B

Tel: 2715 4782

www.oiman.com

2022 年

營業時間 Business Hours : 10:00 – 19:00 ( 周一至六 Mon-Sat )

13:00 – 18:00 ( 周日 Sun )

法定勞工假休息 Closed on statutory holidays

## 保良局顏寶鈴書院 – 購買夏季校服通知

Po Leung Kuk Ngan Po Ling College – Notice of purchase of summer school uniform

請填上訂購數量，親臨到門市購買，尺碼將由職員量度：

Please indicate the quantity required for each item. Sizes will be measured by our staff.

### 男生恤衫 Boys' Shirt

尺碼 Size	12 吋(34 胸 24 長)	13 吋(36 胸 25 長)	14 吋(38 胸 26 長)	15 吋(40 胸 27 長)	16 吋(42 胸 28 長)	數量 Qty.
價錢 Price	\$ 65	\$ 70	\$ 75	\$ 80	\$ 85	

### 男生西褲 Boys' Trousers (24-29" 吋腰 waist)

尺碼 Size	34 碼(34 長)	36 碼(36 長)	38 碼(38 長)	40 碼(40 長 30 腰)	42 碼(42 長 32 腰)	數量 Qty.
價錢 Price	\$ 95	\$ 105	\$ 115	\$ 125	\$ 135	

### 女生恤衫 Girls' Blouse

尺碼 Size	34 碼(34 胸 22 長)	36 碼(36 胸 23 長)	38 碼(38 胸 24 長)	40 碼(38 胸 25 長)	42 碼(42 胸 26 長)	數量 Qty.
價錢 Price	\$ 65	\$ 70	\$ 75	\$ 80	\$ 85	

### 女生校裙 Girls' Skirt (24-29" 吋腰 waist)

尺碼 Size	34 碼(34 長)	36 碼(36 長)	38 碼(38 長)	40 碼(40 長)	數量 Qty.
價錢 Price	\$ 100	\$ 110	\$ 120	\$ 130	

### 短袖運動衫 P.E. T-Shirt

尺碼 Size	S	M	L	XL	XXL	數量 Qty.
價錢 Price	\$ 65	\$ 65	\$ 65	\$ 70	\$ 75	

### 運動短褲 P.E. Shorts

尺碼 Size	S	M	L	XL	XXL	數量 Qty.
價錢 Price	\$ 60	\$ 60	\$ 60	\$ 65	\$ 70	

### 長袖運動外套 P.E. Jacket

尺碼 Size	S	M	L	XL	XXL	數量 Qty.
價錢 Price	\$ 140	\$ 145	\$ 145	\$ 150	\$ 155	

### 運動長褲 P.E. Pants

尺碼 Size	S	M	L	XL	XXL	數量 Qty.
價錢 Price	\$ 100	\$ 110	\$ 110	\$ 120	\$ 120	

### 男/女生冷衫 Boys'/Girls' Sweater

尺碼 Size	S	M	L	XL	XXL	數量 Qty.
背心 Vest	\$ 170	\$ 180	\$ 180	\$ 190	\$ 190	
長袖 Long Sleeve	\$ 220	\$ 230	\$ 230	\$ 240	\$ 240	

### 女生領花 Girls' Bow Tie

尺碼 Size	--	數量 Qty.
價錢 Price	\$ 18	

### 男生皮帶 Boys' Belt

尺碼 Size	24 – 36" 腰	數量 Qty.
價錢 Price	\$ 42	





# 合眾制服有限公司

地址:九龍荔枝角青山道 478 號百欣大廈 3 樓 B 座 電話: 2387 6628 (4 條線)

(荔枝角港鐵站 B1 出口, 聯邦廣場斜對面、近明愛醫院)

營業時間: 09:00-12:30 及 14:00-18:00 星期日及“公眾”假期休息

## Hop Chung Uniform Limited

Address: Block B, 3/F, Por Yen Building, 478 Castle Peak Road, Cheung Sha Wan TEL: 2387-6628 (4 lines)  
(Lai Chi Kok MTR Exit B1, Near Caritas Medical Centre)

Business hours: 09:00-12:30 & 14:00-18:00 Closed on Sunday and Public Holidays

### 【有關學生購買夏季校服詳情】

2022 年 7 月

### 【Information regarding purchase of summer school uniforms】

July 2022

1. 由即日起至 2022 年 **8 月 31 日**, 學生或家長可於荔枝角門市購買夏季校服現貨。欲免向隅, 請家長盡早購買。

**\*\* 於 8 月 31 日或之前購買校服, 可享優惠價購買\*\***

2. 若家長自行縫製校服, 可到學校參閱校服款式。

1. Summer school uniforms are available at our shop at Lai Chi Kok from now on until **31 August 2022**. Please make purchase as early as possible before they are out of stock.

**\*\*Special discount will be offered on purchase made on or before 31 August 2022. \*\***

3. Parents may refer to the samples of summer school uniforms displayed at the school if they opt to prepare the uniforms by themselves.

### 保良局顏寶鈴書院 2022-2023 年度夏季校服價目

### Po Leung Kuk Ngan Po Ling College 2022-2023 summer uniform price list

#### (由即日起至 8 月 31 日優惠價)

#### (Preferential price from now on until 31 August)

男、女生恤衫 (免漿燙 ~ 的確涼布料) Shirt for boys and girls

尺碼(衫長) Size (shirt length)	24"	25"	26"	27"	28"
正價 Original price	\$63	\$68	\$72	\$75	\$78
優惠價 Preferential price	\$60	\$65	\$68	\$71	\$74

男生西褲 (免漿燙) Boys' trousers

尺碼(腰圍) Size (waistline)	23"-24"	25"-26"	27"-28"	29"-30"	31"-32"
正價 Original price	\$96	\$105	\$114	\$121	\$127
優惠價 Preferential price	\$91	\$100	\$108	\$115	\$121

女生校裙(免漿燙 ~ 連身裙: 上身背心裡布, 下身格仔布半截裙) Girls' dress

尺碼(裙長)Size	33½"	35"	36½"	38"	40"
正價 Original price	\$97	\$106	\$115	\$122	\$128
優惠價 Preferential price	\$92	\$101	\$109	\$116	\$122

四社短袖運動衣 P.E shirt

尺碼Size	S	M	L	XL	XXL
正價 Original price	\$56	\$61	\$64	\$66	\$69
<b>優惠價 Preferential price</b>	<b>\$53</b>	<b>\$58</b>	<b>\$61</b>	<b>\$63</b>	<b>\$66</b>

黑色運動短褲 P.E. shorts

尺碼Size	S	M	L	XL	XXL
正價 Original price	\$54	\$58	\$61	\$63	\$65
<b>優惠價 Preferential price</b>	<b>\$51</b>	<b>\$55</b>	<b>\$58</b>	<b>\$60</b>	<b>\$62</b>

長運動褲 P.E. pants

尺碼 Size	S	M	L	XL	XXL
正價 Original price	\$96	\$101	\$107	\$112	\$117
<b>優惠價 Preferential price</b>	<b>\$91</b>	<b>\$96</b>	<b>\$102</b>	<b>\$106</b>	<b>\$111</b>

運動外套 P.E. jacket

尺碼 Size	S	M	L	XL	XXL
正價 Original price	\$128	\$133	\$138	\$144	\$149
<b>優惠價 Preferential price</b>	<b>\$122</b>	<b>\$126</b>	<b>\$131</b>	<b>\$137</b>	<b>\$142</b>

冷背心 Waistcoat

尺碼 Size	34"	36"	38"	40"	42"	44"
正價 Original price	\$168	\$173	\$178	\$183	\$188	\$193
<b>優惠價 Preferential price</b>	<b>\$160</b>	<b>\$164</b>	<b>\$169</b>	<b>\$174</b>	<b>\$179</b>	<b>\$183</b>

冷外套 Sweater

尺碼 Size	34"	36"	38"	40"	42"	44"
正價 Original price	\$193	\$198	\$203	\$208	\$213	\$218
<b>優惠價 Preferential price</b>	<b>\$183</b>	<b>\$188</b>	<b>\$193</b>	<b>\$198</b>	<b>\$202</b>	<b>\$207</b>

女生格仔蝴蝶呔 Girls' bow tie

正價 Original price	<b>\$23</b>	<b>優惠價 Preferential price</b>	<b>\$22</b>
-------------------	-------------	-------------------------------	-------------

價目只按尺碼表比例遞增，特大尺碼及度身訂造均不另收取任何附加費用。

Prices increase with size increment. There is no surcharge on extra-large size and tailor- made school uniforms.



**Po Leung Kuk Ngan Po Ling College School Bus Service Application Form**

**保良局顏寶鈴書院校車服務申請表格**

Name of student: \_\_\_\_\_  
(學生姓名) Last Name (姓氏) First Name (名字) English Name (英文名)

Class (班別): F. \_\_\_\_\_ Gender (性別): \_\_\_\_\_

Telephone: \_\_\_\_\_  
(電話) Home (住宅) Mobile (無線電話) Other (其他)

Address: \_\_\_\_\_  
(地址) Flat/ Unit (室) Floor (層) Building/ Block (大廈名稱/座數)

\_\_\_\_\_   
Phase (期數) Garden/ Estate (屋苑/屋苑名稱)

\_\_\_\_\_   
Street/ Road No. (街道/門牌號數)

\_\_\_\_\_   
District (地區) H.K/ Kln/ N.T (香港/九龍/新界)

Starting Date (開始日期): \_\_\_\_\_ (dd/mm/yy)

Signature of parent/ guardian (家長/監護人簽署) Date (日期)

Remarks 備註:

1. If a school bus route serves less than eight students at the beginning or in the middle of a semester, the bus route will be cancelled due to rising operating cost.  
因營運成本上升，如一校車路線於學期初或中段之乘車學生人數少於八名，該校車路線將會被取消。
2. During test and examination period, school bus service (round-trip) will be provided as usual, but all school buses will depart from the school at the same scheduled departure time.  
於測考期間，校車公司會如常提供校車服務（來回程），惟於回程時所有校車均於劃一時間離開學校。
3. Should you opt not to use the school bus service, please inform Kong Ben Company of it one month in advance.  
如家長不欲繼續使用校車服務，請於一個月前通知港斌公司。
4. Should you have any queries, please contact Kong Ben Company at 91952033 (Ms. Yiu) / 65020994 (Mr. Cheung) or kongbencompany@gmail.com.  
如有查詢，請致電 91952033（姚女士）/ 65020994（張先生）或電郵至 kongbencompany@gmail.com 與港斌公司聯絡。





Po Leung Kuk Ngan Po Ling College

保良局顏寶鈴書院

26 Sung On Street, Tokwawan, Kowloon

九龍土瓜灣崇安街26號

Tel 電話: 24623932

Fax 傳真: 24623929

Application No.

Date Received

2014/11/20

Student Hostel Admission Application Form 學生宿舍報名表

Name of Student	(Surname)	(Given name)			
學生姓名	(姓)	(名)			
Date of Birth 出生日期	(dd-mm-yy) (日-月-年)	Sex 性別		Class (20-21) 班別	
HKID Card No. 香港身份證號碼		Nationality 國籍		Religion 宗教	
Telephone No. 電話號碼	(Home) (住宅)	(Mobile) (手提)		Please affix recent photo 請貼上近照	
Residential Address 住址					
Correspondence Address (if applicable) 通訊地址 (如與住址不同)					
Email 電郵地址					
Main Reasons for Applying to become a Boarder 申請為宿生的主要原因					

	Father 父親	Mother 母親	Guardian 監護人
Name in Full 姓名			Father 父親 <input type="checkbox"/> Mother 母親 <input type="checkbox"/> or other 或其他:
Occupation & Position 職業及職位			Name in Full 姓名: Relationship with student 與學生關係:
Contact No. 聯絡電話			Contact No. 聯絡電話:

Please "✓" the appropriate box(es) 請於適當 ☐ 加「✓」

I declare that to the best of my knowledge and belief the information listed in this form is true and correct.

If false information is provided, the application will be rendered null and void.

本人聲明此表格內的資料全屬正確無訛，倘若有虛報資料，則本申請作廢。

Signature of parent/guardian

家長/監護人簽署: \_\_\_\_\_

Name of parent/guardian

家長/監護人姓名: \_\_\_\_\_

Date 日期: \_\_\_\_\_

## Medical History of Student 學生病歷表 (2022/ 2023)

Name of Student 學生姓名 : \_\_\_\_\_ Sex 性別 : \_\_\_\_\_

Class 班別 : \_\_\_\_\_ Date of Birth 出生日期 : \_\_\_\_\_

Student ID 學生證編號 : \_\_\_\_\_

Name of Parent/Guardian : \_\_\_\_\_ Contact Telephone : \_\_\_\_\_  
家長/監護人姓名 聯絡電話

1. If the student has ever had the following medical condition(s), please mark "X" in the appropriate box and specify details. 如學生曾患下列疾病，請在適當的方格內寫上「X」，並填寫有關詳情。

	Age Detected 患病時年齡	Age Recovered 痊癒年齡	Details of Disease 患病詳情
G6PD deficiency 葡萄糖-6-磷酸脫氫酶缺乏症			
Bronchial asthma 哮喘			
Epilepsy 羊澇			
Fits due to fever 因高熱引致抽搐			
Kidney disease 腎病			
Heart disease 心臟病			
Diabetes mellitus 糖尿病			
Hearing defect 聽覺不健全			
Haemophilia 血友病			
Anaemia 貧血			
Other blood disease 其他血病			
Allergy to drugs 藥物敏感			
Allergy to vaccines 疫苗敏感			
Allergy to food 食物敏感			
Other allergies 其他敏感			
Tuberculosis 肺結核			
Minor operation 曾進行小型手術			
Major operation 曾進行大型手術			
Others 其他			

2. If the student is considered not suitable for participation in P.E. lessons or any other type of school activity, please specify :

倘認為學生不宜上體育課，或參加其他類型的學校活動，請具體說明：

---

---

---

---

---

---

and submit a medical certificate for the school's reference.

並請提交醫生證明書，供學校備案。

3. Any other remarks : 其他補充資料：

---

---

---

---

---

Date

日期

---

Signature of parent/guardian

家長/ 監護人簽署





Po Leung Kuk Ngan Po Ling College

保良局顏寶鈴書院

26 Sung On Street, Tokwawan, Kowloon

九龍土瓜灣崇安街 26 號

Tel 電話：2462 3932 Fax 傳真：2462 3929

**Reply Slip**

**(Please return this slip and the filled Medical History Form to class teacher on 01.09.2022)**

To: Principal

Po Leung Kuk Ngan Po Ling College

I acknowledge receipt of your registration documents including:

1. A Summer Programme Schedule
2. A Letter to Parents about Arrangement of School Uniform and Textbook Sale, Tuition Fee Arrangement, Direct Debit of Tuition Fee, School Fee Remission Scheme 2022/2023, Order of Exercise Books, Lunch Arrangement, eClass Mobile Application for Parents, Provision of Microsoft Office ProPlus Student Accounts to New Students, Processing of Personal Data in the Form of Photographs and Videos, Student Personal Accident Insurance Plan and Withdrawal Policy
3. A Letter to Parents about School Policies Concerning Examinations, Learning and Teaching, and Library 2022/2023
4. A Letter to Parents about Reminders on School Rules and the Use of Mobile Computer Devices Policy
5. A Textbook List with Textbook Online Ordering Guidelines
6. A Lunch Order Form for September
7. A School Uniform Design Sheet
8. School Uniform Suppliers' Information
9. A School Bus Service Application Form
10. An Application Form for Admission to Student Hostel
11. A Medical History Form
12. A Reply Slip for all attached Letters to Parents
13. Health Declaration Forms

**Remarks:**

- (1) Parents and students are free to choose which textbook and uniform supplier to make purchase from.
- (2) If the school does not receive the "Notice of Withdrawal" on or before **1 AUGUST 2022**, the student is assumed to continue his/her studies in our school and he/she will be registered for the coming academic year.
- (3) Tuition fee for September and exercise book fee will be collected through AUTOPAY on **15 AUGUST 2022**. Those applying for Local Education Allowance Scheme also have to pay these fees. For details, please refer to the corresponding letter to parents in the registration documents. Please make sure that there is a sufficient amount of money in the designated bank account on the payment date.
- (4) All paid fees (including school fee and exercise book fee, etc.) are non-refundable.
- (5) Photos or videos of students may be taken during school activities and uploaded onto our school webpage and/ or used for other purposes for public interest.

Signature of parent/guardian : \_\_\_\_\_

Name of parent/guardian : \_\_\_\_\_

Name of student : \_\_\_\_\_

Class (Class No.) : \_\_\_\_\_ ( )

Date : \_\_\_\_\_

Ref: Sch/Par/Reg/01/IBYear1/2223



Po Leung Kuk Ngan Po Ling College

保良局顏寶鈴書院

26 Sung On Street, Tokwawan, Kowloon

九龍土瓜灣崇安街 26 號

Tel 電話：2462 3932 Fax 傳真：2462 3929

回 條

(請於九月一日將回條及已填妥之個人病歷表交予班主任)

敬覆者：

本人已知悉 貴校各項註冊文件之內容：

1. 暑期行事曆
2. 有關校服及教科書售賣安排、學費安排、以自動轉賬形式繳交學費、學費減免計劃 2022/2023、訂購練習簿、午膳安排、電子通告及即時訊息、提供「Microsoft Office 365 專業增強版」學生帳戶予新生之事宜、有關個人資料(照片及影片)之處理、學生(團體人身)意外保險及退學政策事宜之通告
3. 有關測考、學與教及圖書館政策之通告 2022/2023
4. 有關校規提醒事項及使用流動電腦裝置規則之通告
5. 教科書書目表及網上訂購教科書指引
6. 九月份午餐訂購表
7. 校服式樣
8. 校服商資料
9. 校巴服務申請表
10. 入住學校宿舍申請表
11. 個人病歷表
12. 通告回條
13. 健康申報表

備註：

- (1) 家長和學生可自由選用任何課本及校服供應商。
- (2) 如學校在 2022 年 8 月 1 日 或之前沒收到「退學通知書」，則假設學生繼續就讀並自動註冊成為下一年度學生。
- (3) 9 月份學費及練習簿費將於 2022 年 8 月 15 日 以自動轉賬形式收取。申請本地教育津貼者亦須要繳交以上費用，詳情請參閱註冊文件內的家長信。請確保轉賬當日 貴戶口存款充足，以繳付有關費用。
- (4) 所有已繳之費用(包括學費及簿費等)一概不獲退回。
- (5) 學校活動期間或會拍攝學生的照片或影片，並有機會上載到學校網頁和/或用作其他符合公眾利益的用途上。

此覆

保良局顏寶鈴書院校長

家長/監護人簽署

:

家長/監護人姓名

:

學生姓名

:

班別 (學號)

:

日期

:

Ref: Sch/Par/Reg/01/IBYear1/2223

## Declaration form for travel history and health status of students

Name of Student: \_\_\_\_\_ Application no.: \_\_\_\_\_ Sex: #M/F

*Please complete the form below and return it to school. (Please put a "✓" in the appropriate box.)***Part A – Travel history of your child outside Hong Kong in the past 14 days**

- ☐ My child has not been away from Hong Kong in the past 14 days prior to the school activity.
- ☐ My child has paid visit outside Hong Kong in the past 14 days prior to the school activity.

Duration: From \_\_\_\_\_ (Month) \_\_\_\_\_ (Day) (Departure Date)

To \_\_\_\_\_ (Month) \_\_\_\_\_ (Day) (Return Date)

Destination (Please specify countries and cities): \_\_\_\_\_

**Part B – Whether your child has confirmed infection of COVID-19**

- ☐ My child has not confirmed infection of COVID-19.
- ☐ My child has confirmed of COVID-19 infection and has already recovered.

Hospitalization Period: From \_\_\_\_\_ (Month) \_\_\_\_\_ (Day)

To \_\_\_\_\_ (Month) \_\_\_\_\_ (Day)

**Part C – Health status of those taking care of your child, or those living with your child**

- ☐ Person taking care of or living together with my child has not confirmed infection of COVID-19.
- ☐ Person taking care of or living together with my child has confirmed infection of COVID-19. The person #has recovered / is still receiving treatment in hospital / has been discharged from hospital and is taking medicine.

Relation with my child (please specify): \_\_\_\_\_

- ☐ Person taking care of or living together with my child has not been classified as a "close contact of an infected person" of COVID-19.\*

**Part D – Current health status of your child**

- ☐ My child has no symptoms of cough, shortness of breath, breathing difficulty and sore throat.
- ☐ My child has symptoms of cough, shortness of breath, breathing difficulty and sore throat.

Signature of Parent/Guardian: \_\_\_\_\_

Name of Parent/Guardian (in Block Letter): \_\_\_\_\_

Date: \_\_\_\_\_

# Please delete as appropriate

\* In general, "close contact" means having cared for, having lived with, or having had direct contact with respiratory secretions and body fluids of a confirmed patient.



2019冠狀病毒病  
學生外遊及健康狀況申報表

學生姓名：\_\_\_\_\_ 申請編號：\_\_\_\_\_ 性別：#男／女

請填妥下列表格交回學校（在適當方格上加上「✓」號）。

甲部：14天內的學生外遊紀錄

- ☐ 本人子女在學校活動前14天內沒有離開香港。
- ☐ 本人子女在學校活動前14天曾到訪香港境外的國家／地區。
- 離港時期：由\_\_\_\_\_年\_\_\_\_\_月\_\_\_\_\_日（離港日期）至\_\_\_\_\_月\_\_\_\_\_日（返港日期）
- 外遊地點（請列明國家及城市）：\_\_\_\_\_

乙部：學生是否曾經確診

- ☐ 本人子女沒有證實患上「2019冠狀病毒病」。
- ☐ 本人子女曾證實患上「2019冠狀病毒病」，並已痊癒。
- 留院日期：由\_\_\_\_\_月\_\_\_\_\_日至\_\_\_\_\_月\_\_\_\_\_日

丙部：照顧學生、或與學生同住的人士的健康情況

- ☐ 照顧本人子女、或與其同住的人士均沒有證實患上「2019冠狀病毒病」。
- ☐ 照顧本人子女、或與其同住的人士中，有證實患上「2019冠狀病毒病」，現#已經痊癒／仍留院醫治／出院進行藥物治療。
- 該患者和本人子女的關係：\_\_\_\_\_
- ☐ 照顧本人子女、或與其同住的人士中，並沒有被衛生署界定為「2019冠狀病毒病」確診個案的「密切接觸者」。\*

丁部：學生的健康狀況

- ☐ 本人子女沒有咳嗽、氣促、呼吸困難或咽喉痛等徵狀。
- ☐ 本人子女有咳嗽、氣促、呼吸困難或咽喉痛等徵狀。

家長／監護人簽署：\_\_\_\_\_

家長／監護人姓名（正楷）：\_\_\_\_\_

日期：\_\_\_\_\_

#請刪去不適用者

\*註：「密切接觸者」一般指曾經照顧患者、與患者共同居住或曾經接觸過患者的呼吸道分泌物和體液的人士。